



Fall 2023

Love Notes

News & Updates from Ronald McDonald House Charities of the Triangle

The Greatest Gift

To see 9-year-old Mason play at Ronald McDonald House, you might not know he's sick. The only sign is the bandage on his neck covering a port that's used for dialysis three times each week.

Mason was diagnosed with kidney disease when he was just two years old. Since then, his health has been a challenge, requiring 100 days at the hospital over the past 18 months alone.

Mason lives near Holden Beach, NC, with his parents, Mike and Robin. Their commute to UNC Children's Hospital is more than 3 hours each way.

Ronald McDonald House became the family's second home in the early days of Mason's treatment. Recently he had both diseased kidneys removed, making regular dialysis trips mandatory.

Today sociable Mason is the self-described mayor of Ronald McDonald House, making daily rounds on a tricycle to visit his friends and fan club.

Robin shared, "Without the Ronald McDonald House, it would be so much more difficult - I hate to even think about it. It's not just a place to stay but meals and the shuttle to the hospital. All of it. Mike added, "It's a community support system. Words can't express the help it's been to us and to other families."

When asked what he'd like to share with RMH friends, Mason said, "Thanks for taking care of me, *and* my mom and dad."



Mason (9) needs a kidney donation from a compatible living donor.

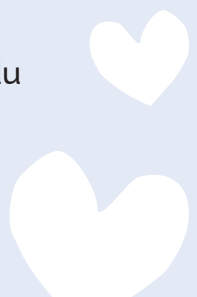
To learn more about the living donor program at UNC Health, contact

Amy Woodard
Living Donor Coordinator
UNC Center for Transplant Care
(984) 974-7568
Amy.Woodard@UNCHealth.unc.edu

You may also visit
www.uncmedicalcenter.org/living-donors



See Mason's story at bit.ly/RMHCMason





RMHC: A Team We Can All Support

Early in my career, I learned not to question a person's athletic allegiances. As we enter the midpoint of football season, I am reminded of this wisdom.

During the beginning talks on our journey to merge our Chapel Hill and Durham & Wake chapters, I heard the same question on repeat: *What color blue do you like?*

Aware of the importance of my answer, I often hedged. The fact is I like both of the blues and NC State, but I attended ECU and ASU. You can see my predicament, right?

Abraham Lincoln said, "Better to remain silent and be thought a fool than to speak out and remove all doubt."



The good news is Ronald McDonald House Charities requires no allegiance besides unwavering, enthusiastic endorsement of the mission to help seriously ill children and their families. *This is a team we can all support!*

Since our chapters formally joined forces on July 1, we have been hard at work. We are wholeheartedly serving our mission while at the same time looking ahead.

The strength of our combined organizations can be seen in the numbers. We're now the 8th largest RMHC chapter of 185 in the country and the 13th largest of 386 in the world. We offer 103 families a welcoming, comfortable home away from home each night. Our Family Rooms will support tens of thousands of families inside Triangle-area hospitals this year.

And RMHC is so much more than the numbers!

Scoreboards matter, but so do relationships and stories – and hope.

The greatest win of our new organization so far may be our team's efforts to help spread the word about Mason's need for a life-saving kidney from a living donor.

Or it may be the Herculean staff effort undertaken to clean up after a storm left trees on RMH of Durham.

My personal belief is our greatest achievement as RMHC of the Triangle is bringing to reality the slogan we've used since talks of the merger began: *Same House, Same Heart.*



What I know for certain is the success of a team is made possible by each member doing what he or she does best. Without all of you, our team is not complete.

Thank you for everything you bring to this life-changing mission of hospitality and hope!

With gratitude,

Oie Osterkamp
CEO



The Holiday Gift that Gives Twice!

Share the love this year with holiday gifts that give twice!

The suggested donation per card is \$10.

We'll send cards to your designees telling them you made a holiday donation in their honor.

– or –

If you prefer, we'll mail the cards to you to send with your own personal holiday note.

Each card sold will directly support family stays at RMH over the holidays.

How to Order:

Purchase online:

<https://give.classy.org/RMHCHolidayCard>

Order by email:

Mitzi@RMHCTriangle.org

Questions or information:

Mitzi@RMHCTriangle.org, 919-281-1064



A gift of love has been made in your honor

to support families who are staying at
Ronald McDonald House

Your holiday message here

Wishing you warmth and love for the holidays!

Volunteers!



Members of Interstate Ministries on a break from cooking at RMH of Durham.

Coming soon: NEW In-Hospital Volunteer Opportunities

In early 2024, we will open our first Ronald McDonald Hospitality Kiosk at UNC Children's Hospital. Volunteers are needed to welcome families and ensure supplies are stocked.

Contact Kimberly@RMHCTriangle.org to learn more.

Ronald McDonald Houses

Volunteers are needed to help with House operations in Chapel Hill and Durham. Tasks include meal preparation, guest services, and work teams.

RMH of Chapel Hill: Contact Ellison@RMHCTriangle.org

RMH of Durham: Contact Clay@RMHCTriangle.org



Ronald McDonald
House Charities®
of the Triangle

506 Alexander Avenue
Durham, NC 27705

*Share the Gift of **Hope**
this Holiday Season!*

Make a Child's Holiday Wishes Come True!

The Wishing Tree is an angel-tree program to support seriously ill children and their families during the holidays. The heartfelt program offers a meaningful holiday activity for individuals, families, companies, schools, and other groups.

Use our Wishing Tree ornament kit, or share the wish list with your coworkers and friends.

Unwrapped gifts, snacks, and household supplies are requested by Dec. 12.
Gifts may be delivered via Amazon, or in person.

RMH of Chapel Hill

101 Old Mason Farm Road
Chapel Hill, NC 27517

RMH of Durham

506 Alexander Avenue
Durham, NC 27705

bit.ly/RMHCWishingTree

Questions: Traci@RMHCTriangle.org

