



Pull Together!

Collect pop tabs to support seriously ill children and their families!

WHAT?

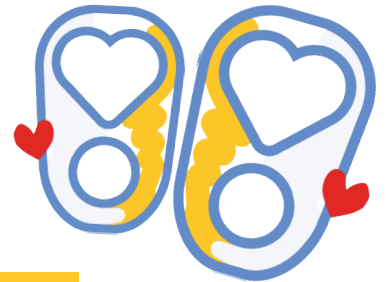
Collect the tabs from aluminum beverage or food cans in any container, such as a two-liter drink bottle or milk jug. RMHC can also provide a special branded sticker to help you promote the program. When full, deliver your container to one of our Ronald McDonald Houses any time or take to any American Legion Post in NC for recycling. Easy!

WHY?

Families of sick and injured children are not charged to stay at Ronald McDonald Houses, however the actual cost to host a family for one night is about \$100. The pop tab recycling program is one way friends generate much-needed revenue to help cover these expenses to support families.

WHO?

Anyone can collect tabs! It's a great way for schools, civic groups, churches, and companies to get involved.



Fun Facts

Pringles Can	1/3 lb	530 tabs
2 liter bottle	1.75 lbs	2,800 tabs
Gallon milk jug	3 lbs	4,800 tabs
Copy paper box	24 lbs	38,400 tabs
32 gallon trash can	80 lbs	128,000 tabs

One million tabs laid end-to-end would measure 16 miles!

Drop off:

Ronald McDonald House of Chapel Hill

101 Old Mason Farm Road, Chapel Hill, NC 27517

Ronald McDonald House of Durham

506 Alexander Avenue, Durham, NC 27705



Ronald McDonald House Charities® of the Triangle

Contact Clay@RMHCTriangle.org or Ellison@RMHCTriangle.org, or visit RMHCTriangle.org to learn more!